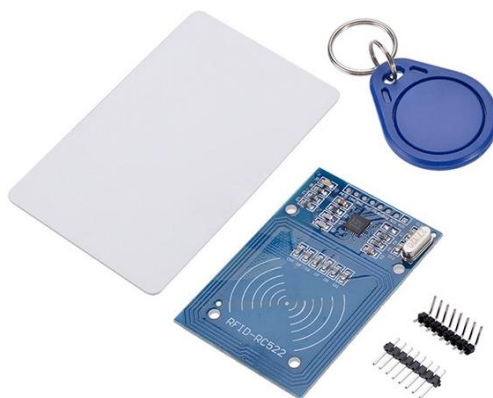


Arduino RFID RC522 Card Reader Module



This RFID module is based on MFRC522 which is a highly integrated reader/writer IC for contactless communication at 13.56 MHz. It support Mifare family card and ISO14443 Type A card. RFID means radio-frequency identification. RFID uses electromagnetic fields to transfer data over short distances. RFID is useful to identify people, to make transactions and others. You can use an RFID system to open a door. For example, only the person with the right information on his card is allowed to enter.

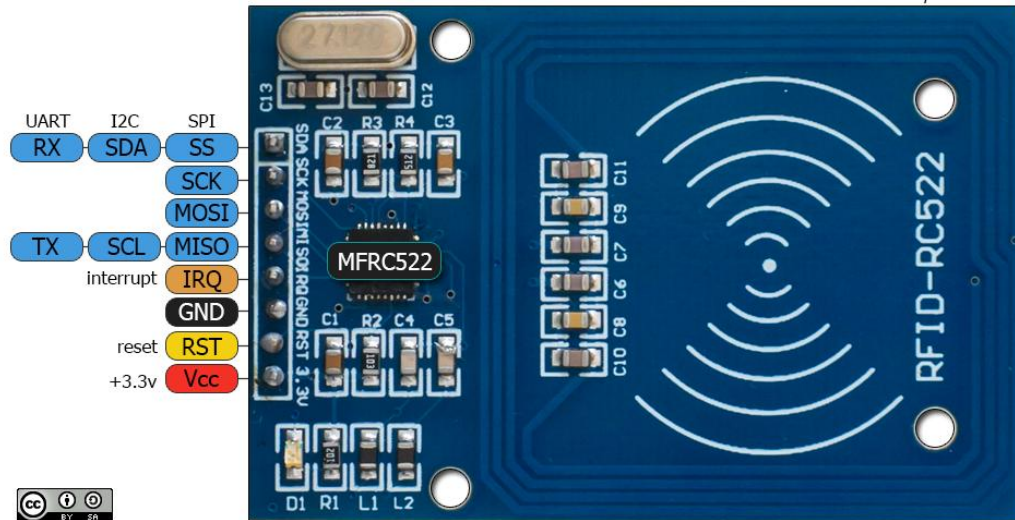
SPECIFICATIONS:

- Operating voltage: 3.3 Vdc.
- Operating frequency: 13.56 MHz.
- Operating distance: 4cm (card), 2cm (token).
- Communication interface: SPI
- Power LED indicator.
- Dimension : 39mm × 60mm
- Weight: 22g.
- Product code: ME000058.

FEATURE:

- MF RC522 is applied to the highly integrated read and write.
- 13.56MHz contactless communication card chip.
- Low-voltage, low-cost, small size of the non-contact card chips to read and write.
- Smart meters and portable handheld devices developed better choice.
- This module can be directly loaded into the various reader molds, very convenient.

PIN-OUTS:



DIMENSIONS (mm):

