

3960 SERIES

3.96mm PITCH WIRE TO BOARD CONNECTOR

● Specifications

Current rating: 5A AC,DC

Voltage rating: 250V AC,DC

Temperature range: -25° C to+85° C

(including temperature rise)

Contact resistance: Initial value/10m Ω Max.

After environmental testing/20m Ω Max.

Insulation resistance: 500M Ω MIN.

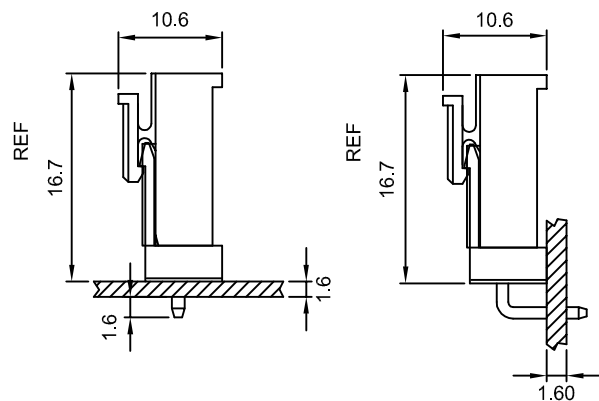
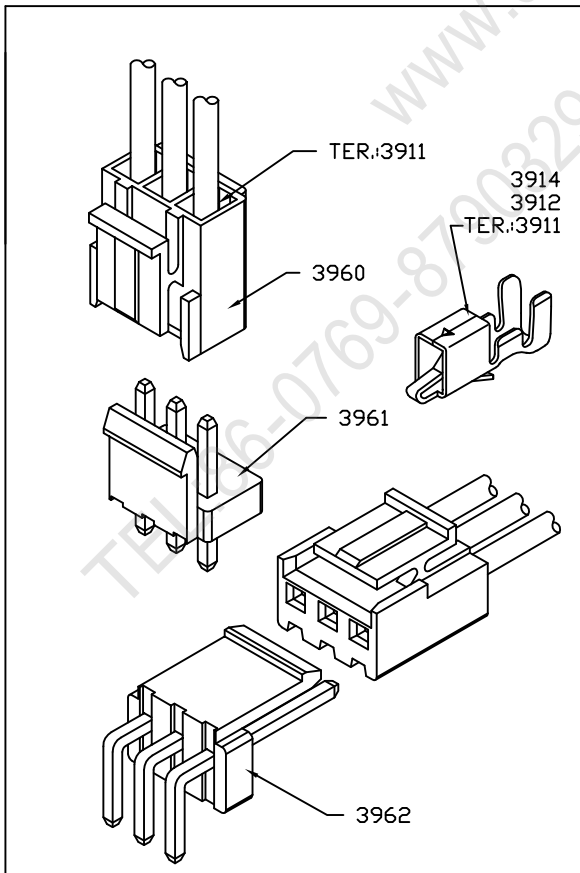
Withstanding voltage: 1000V AC/minute

Applicable wire: AWG#18-22

● Standards



Assembly layout



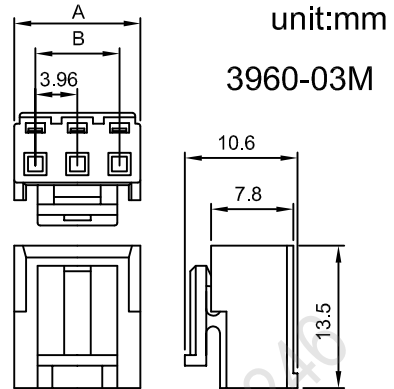
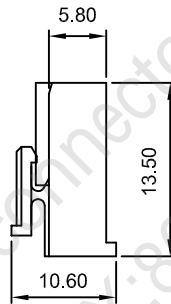
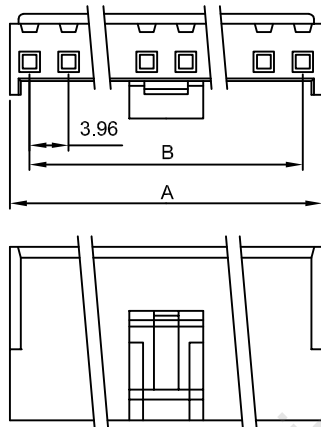


3960

3.96mm PITCH CRIMP HOUSING

Features:

- MAT'L: NYLON 66 UL94V-0
- MATES WITH: 3911 3914 SERIES TERMINAL
- ACCEPTS WITH: 3961 3962 SERIES WAFER
- ACCEPTS WITH 1.14mm(.045") SQUARE PINS



PART NO.	PART NO.	B	A
3960-02	3960-02 M	7.86	3.96
3960-03	3960-03 M	11.82	7.92
3960-04	3960-04 M	15.78	11.88
3960-05	3960-05 M	19.74	15.84
3960-06	3960-06 M	23.70	19.80
3960-07	3960-07 M	27.66	23.76
3960-08	3960-08 M	31.62	27.72
3960-09	3960-09 M	35.58	31.68
3960-10	3960-10 M	39.54	35.64
3960-11	3960-11 M	43.50	39.60
3960-12	3960-12 M	47.46	43.56

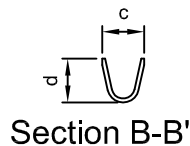
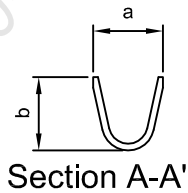
3911/3912/3914/3911A

3.96mm PITCH CRIMP TERMINAL

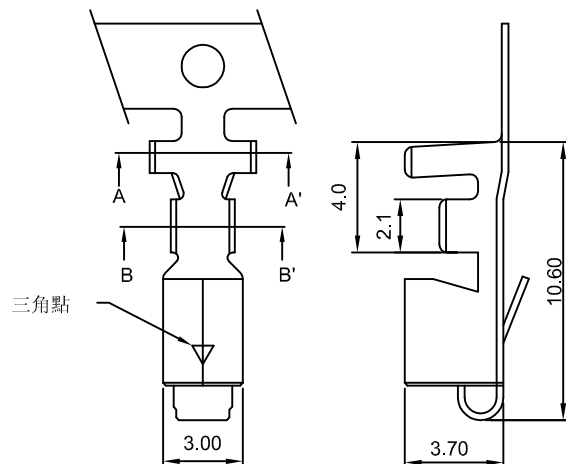
Features:

- THICKNESS: 0.25mm
- MAT'L: BRASS OR PHOSPHOR BRONZE TIN PLATED
- MATES WITH: 3960 SERIES HOUSING
- ACCEPTS WITH: 3961 3962 SERIES WAFER

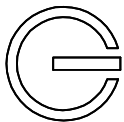
unit:mm



P/N	a	b	c	d
3911	4.00	3.90	2.40	2.30
3912	4.00	3.90	3.00	2.80
3914	5.00	4.90	3.00	2.90



Part No	Wire Range	Insulation O.D.	Material	Finish	Qty/reel
3911	AWG #18-#22	∅3.7~∅1.5	BRASS/PHOSPHOR BRONZE	Tin-plated	3500
3912	AWG #16-#18	∅4.0~∅3.7	BRASS/PHOSPHOR BRONZE	Tin-plated	3500
3914	AWG #16-#18	∅4.0~∅3.7	BRASS/PHOSPHOR BRONZE	Tin-plated	4000
3911A	AWG #18-#22	∅3.7~∅1.5	BRASS/PHOSPHOR BRONZE	Tin-plated	4500



3961 3961-03N2 3.96mm PITCH 180° WAFER

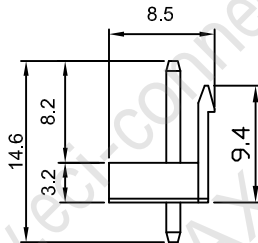
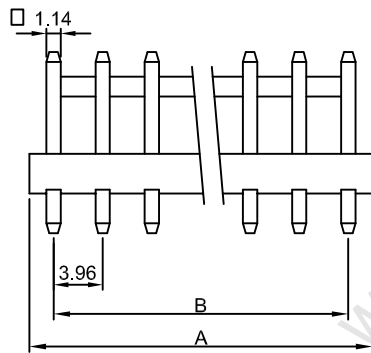
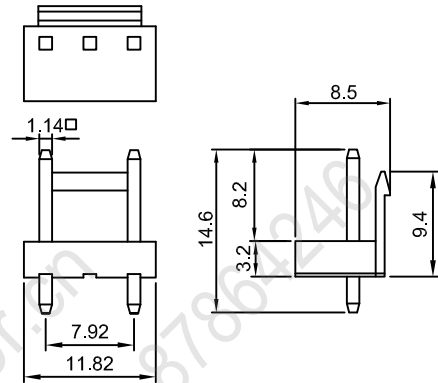
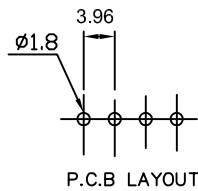
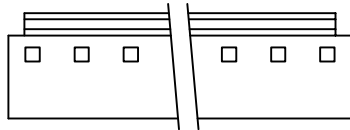
Features:

MAT'L: BODY: NYLON 66 UL94V-0
 PINS: BRASS TIN PLATED
 MATES WITH: 3911 3914 SERIES TERMINAL
 ACCEPTS WITH: 3960 SERIES HOUSING

3961-03N2

unit:mm

3961 SERIES



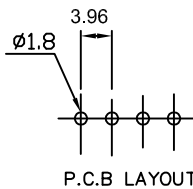
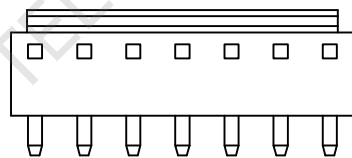
PART NO.	B	A
3961-02	3.96	7.92
3961-03	7.92	11.88
3961-04	11.88	15.84
3961-05	15.84	19.80
3961-06	19.80	23.76
3961-07	23.76	27.72
3961-08	27.72	31.68
3961-09	31.68	35.64
3961-10	35.64	39.60
3961-11	39.60	43.56
3961-12	43.56	47.52

3962 3.96mm PITCH 90° WAFER

Features:

MAT'L: BODY: NYLON 66 UL94V-0
 PINS: BRASS TIN PLATED
 MATES WITH: 3911 3914 SERIES TERMINAL
 ACCEPTS WITH: 3960 SERIES HOUSING

unit:mm



PART NO.	A	B
3962-02	7.92	3.96
3962-03	11.88	7.92
3962-04	15.84	11.88
3962-05	19.80	15.84
3962-06	23.76	19.80
3962-07	27.72	23.76
3962-08	31.68	27.72
3962-09	35.64	31.68
3962-10	39.60	35.64
3962-11	43.56	39.60
3962-12	47.52	43.56

