

### Arduino 1 – Way Channel Opto – Isolated 5V Relay Module



A relay usually an electromechanical device that is actuated by an electrical current which allows circuits to be switched by electrical equipment. The current flowing in one circuit causes the opening or closing of another circuit. Relays are like remote control switches and are used in many applications because of their relative simplicity, long life, and proven high reliability. Relays are used in a wide variety of applications throughout industry, such as in telephone exchanges, digital computers and automation systems. Highly sophisticated relays are utilized to protect electric power systems against trouble and power blackouts as well as to regulate and control the generation and distribution of power. In the home, relays are used in refrigerators, washing machines and dishwashers, also heating and air conditioning controls.

#### **Specifications:**

- Input – 5VDC
- Output – SPDT Relay
- Relay specification – 5A
- Header pins for connecting power and trigger voltage
- LED indicates relay status
- Power Battery Terminal (PBT) for easy relay output connection
- Have C terminal, NO terminal, and NC terminal

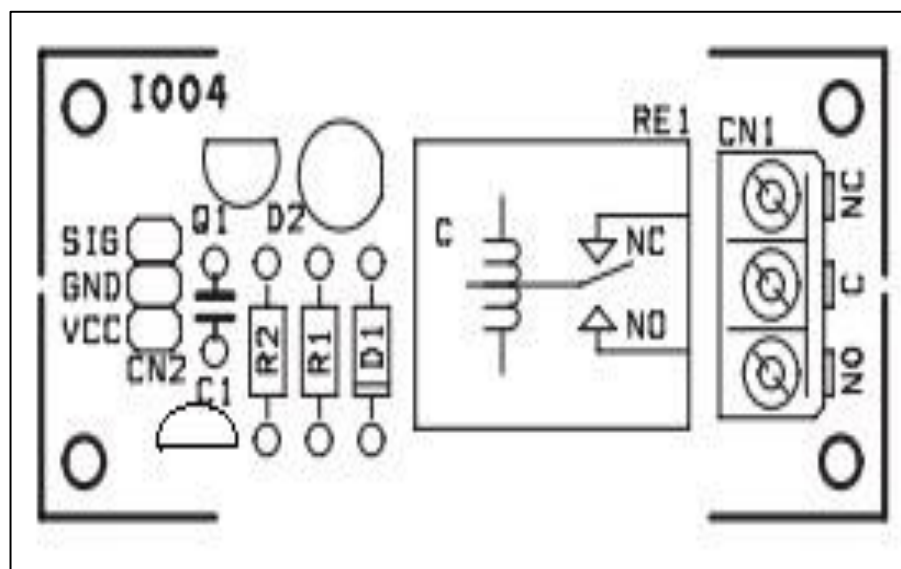
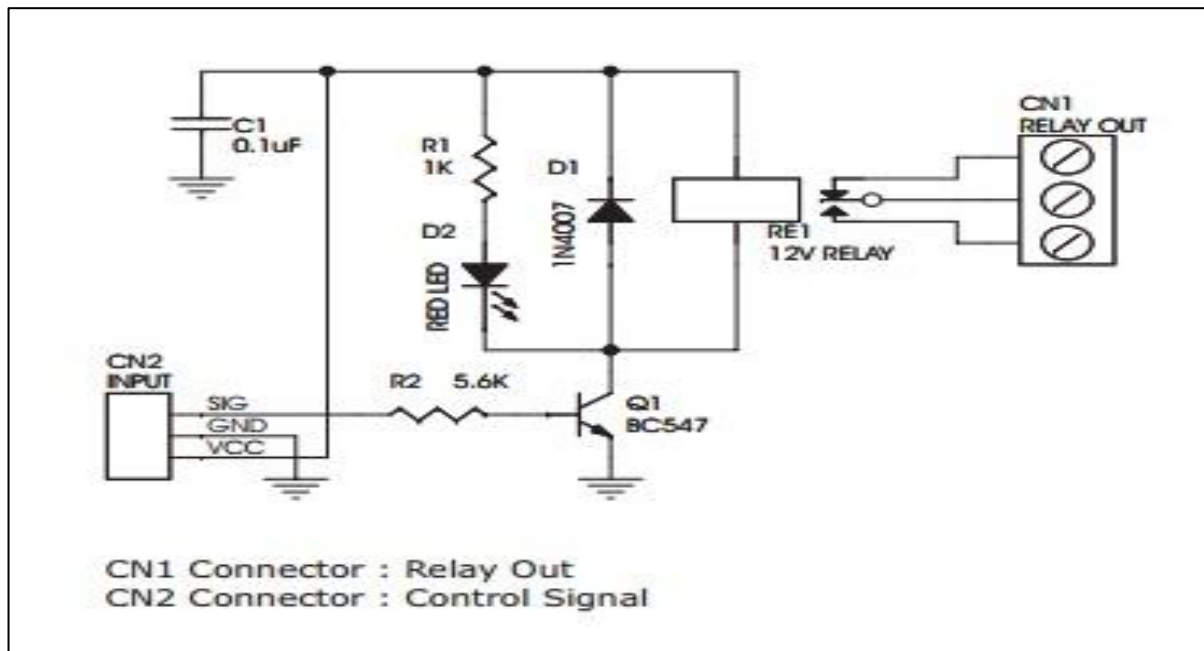
### Pins Out:

DC+ ----->positive power supply (VCC)(5V)

DC- -----> negative power supply (GND)

IN ----->The control end, the driving current should be more than 4mA

### Schematic:



**SYNACORP TRADING & SERVICES**

No.9, 1st Floor, Lrg 1/SS2, Bandar Tasek Mutiara, 14120 Simpang Ampat, S.Prai (S), Penang

Tel : +604.504.1617 Hunting Line : 012.4033.474 Fax : +604.502.1726

(Website) <http://www.synacorp.my> (Email) [sales@synacorp.com.my](mailto:sales@synacorp.com.my)

SR.	QTY.	REF.	DESCRIPTION
1	1	CN1	3 PIN SCREW TERMINAL CONNECTOR
2	1	CN2	3 PIN BERG CONNECTOR
3	1	C1	0.1uF
4	1	D1	1N4007
5	1	D2	RED LED
6	1	Q1	BC547
7	1	RE1	12V RELAY
8	1	R1	1K
9	1	R2	5.6K