

Isolated Switching Power Supply

The power supply is an isolated switching power supply modules, with temperature protection, over current and shortage protection.

Module features:

- High voltage isolation
- AC 85~265V wide voltage input
- DC 12V output voltage accuracy
- Compact and stable performance

Technical Specifications

Input voltage: 85~265V AC, 50/60Hz,

Output voltage: 12V DC (± 0.1)

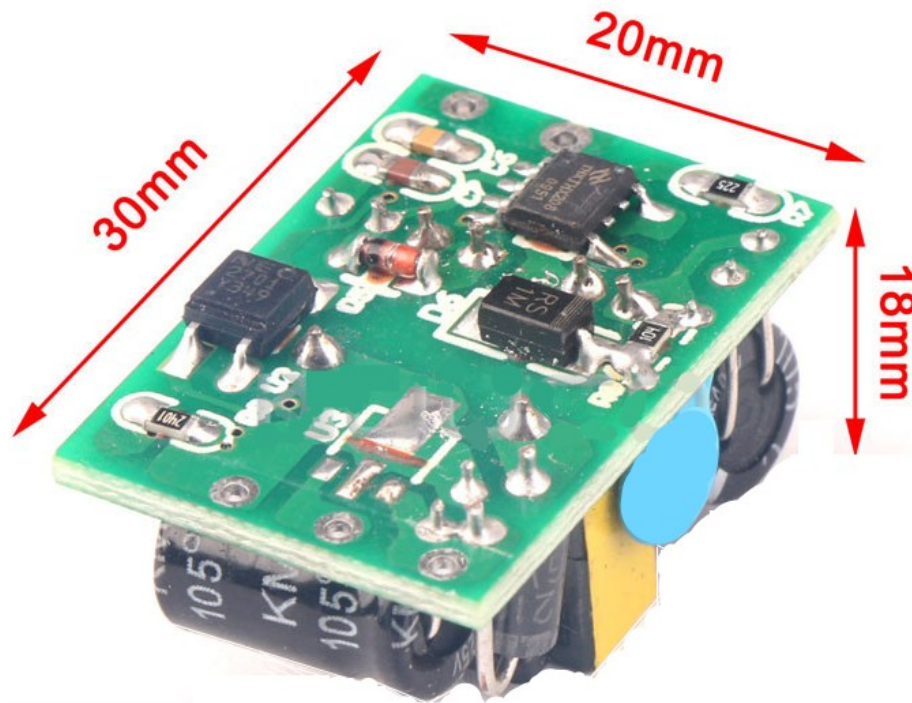
Output current: 450mA

Output power: 5W

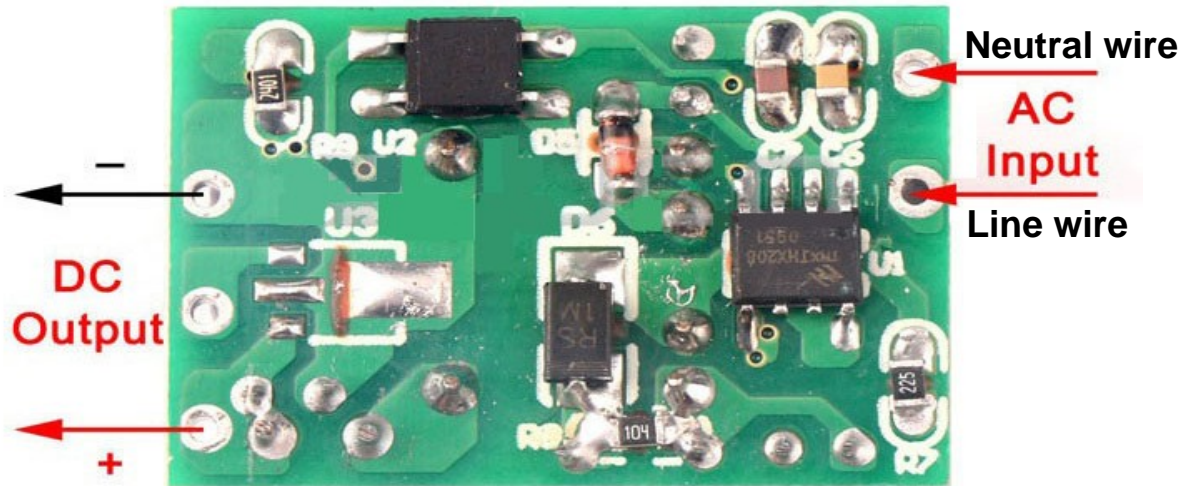
Dimension: 30mm L×20mm W×18mm H

Dimensions, Configuration and Pin-out

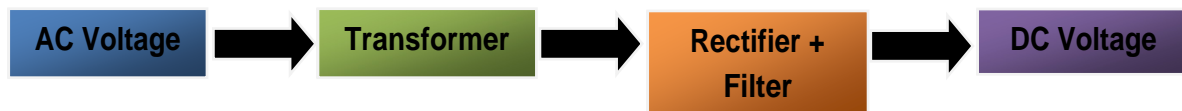
Product dimension (unit:mm):



Product pin-out:



Mechanism



Applications

1. Power Adapter
2. LED Lighting Power Supply
3. Industrial Equipment
4. DIY Project
5. Microcontroller

IMPORTANT NOTES

- 1) Note that the input and output cannot be reversed. Reverse may burn out.
- 2) The input voltage must be higher than the output voltage.
- 3) Heat sinks have been installed.